

MAIN STREET PAINT KIT

Thank you so much for your purchase! We are constantly working hard to create a seamless and fun experience for our clients and pray that this paint kit will bless you.

This kit includes:

- ❖ One 4 layered wood canvas of Main Street, Emmett
- ❖ Three paintbrushes (small, medium and large)
- ❖ Paint in these shades with the corresponding number labels:
 - White (1), Black (2), Light Rust (3), Rust (4), Red (5), Light Yellow (6), Mustard Yellow (7), Lime Green (8), Dark Green (9), Teal (10), Sky Blue (11), Navy (12), Shadow Blue (13), Dark Brown (14), Light Brown (15), Light Grey (16)
 - Please note that I make a lot of these colors, so they may need to be premixed
- ❖ Printed step-by-step directions with photo reference (attached to this paper)
- ❖ Glue to complete your masterpiece
- ❖ Two Command strips to hang your finished product without damaging your walls

We recommend that you use your kit within 30 days of purchase to ensure your paint is at its peak quality.

We are a newer company and quality is something we value for our clients. If you have any suggests, we would love your feedback! Please reach out to us at info@cinkodesigns.com

Thank you, again, for your support!

Matthew & Amara Cinko





First, paint the solid base layer with Sky Blue (11)



Add wind blown clouds with white (1) in sweeping motion



Add "fluff" by dabbing your paintbrush along hard white lines and blending white and blue



Add a base of white (1) to the first layer storefront windows



Paint the first shop Dark Green (9), leaving a space for the yellow detailing



Paint the second shop Rust (4)



Add Mustard Yellow (7) to windows and poles



Add Light Yellow (6) to one awning



Add Light Rust (3) to the side of the building



Add Sky Blue (11) to windows (I missed the top windows of the red store, see next step photo)



Add Dark Brown (14) to the first storefront and around the windows of the second storefront, as well as little 'c's on top of the red storefront.



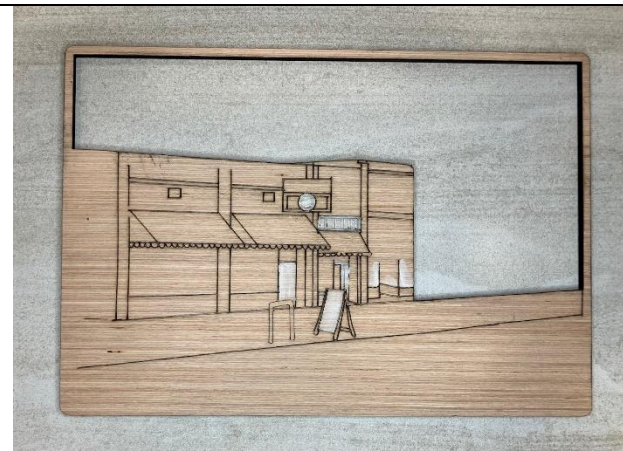
Dab White (1) to Antique Sign. You can see that I also added Dark Brown (14) brickwork to this area by dabbing in little random patterns.



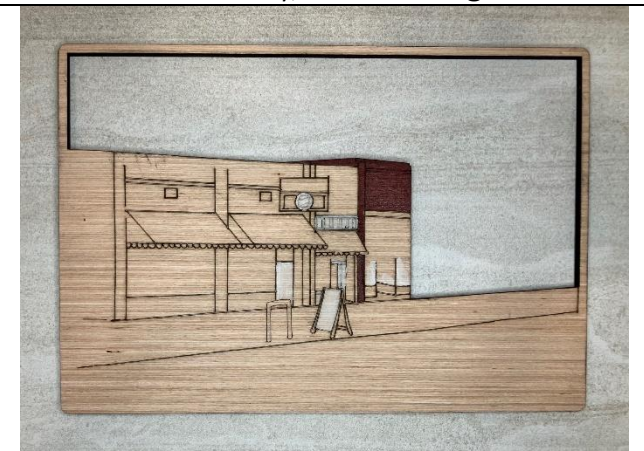
Paint sidewalk Grey (16)



Finish this layer with Black (2) details in windows, doorway, and awning



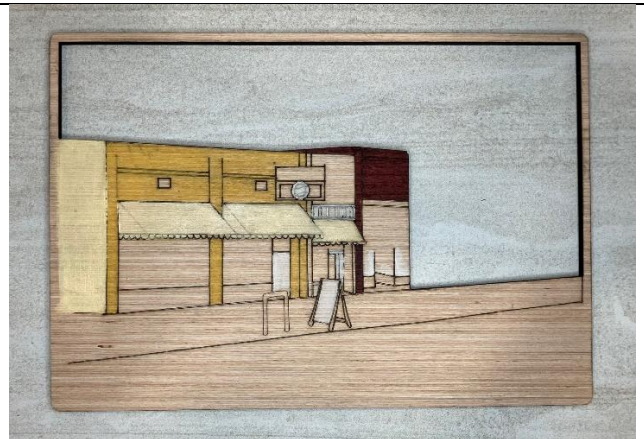
Start the second layer with a base of White (1)



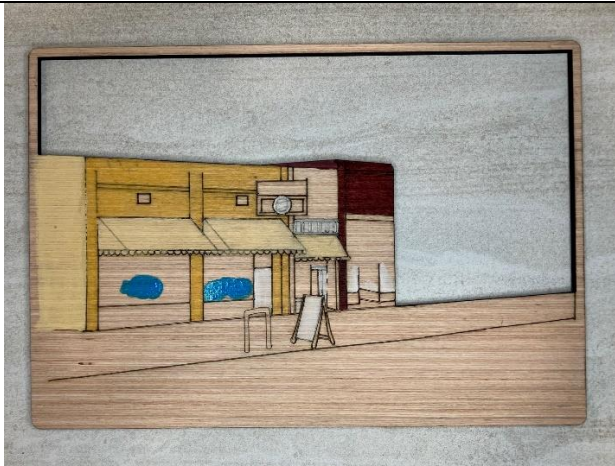
Paint first storefront Rust (4)



Paint second storefront Mustard Yellow (7)



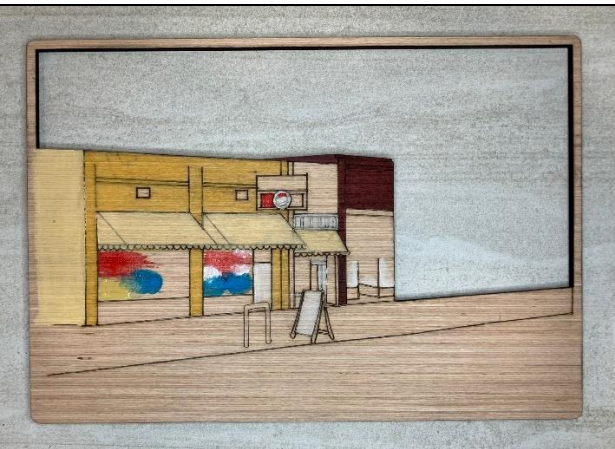
Paint the side of the storefront and awnings Light Yellow (6)



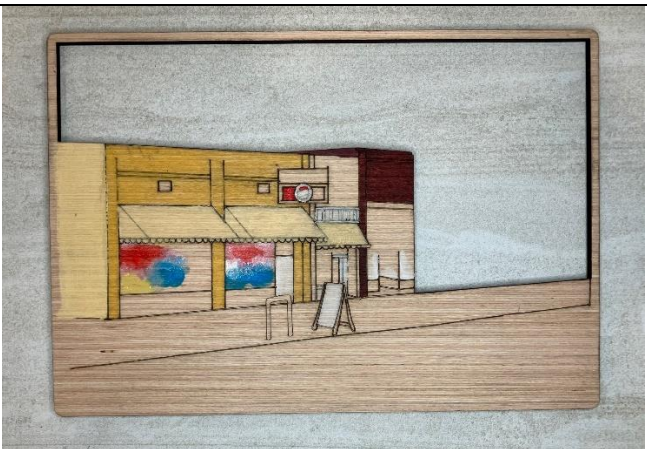
Add Sky Blue (11) to storefront window



Add a little Mustard yellow (7) to storefront window



Add Red (5) and White (1) to window and Pepsi sign



Use water to blend colors together



Add watered down Black (2) to storefront window



Add Navy (12) to Pepsi sign



Paint last storefront Dark Brown (14) and add brick details to yellow storefront



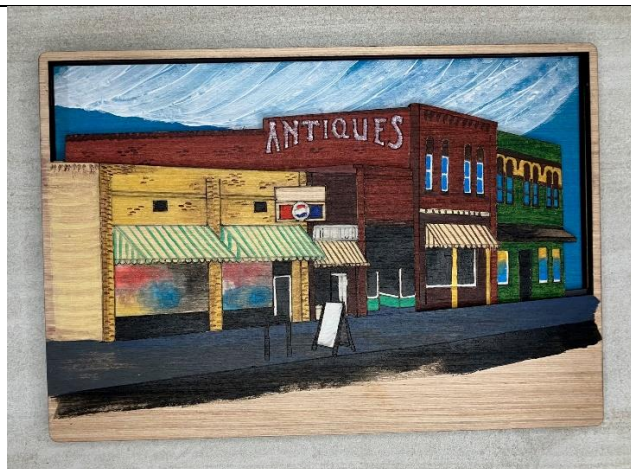
Add Teal (10) lines to ownings and bottom of the first storefront you painted Rust



Paint the sidewalk Light Grey (16)



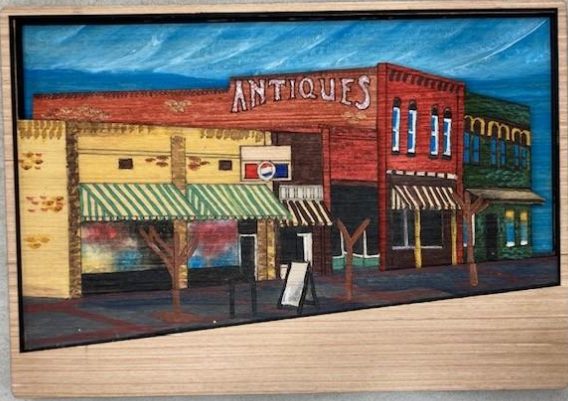
Add shadowing to the sidewalk with Shadow Blue (13)



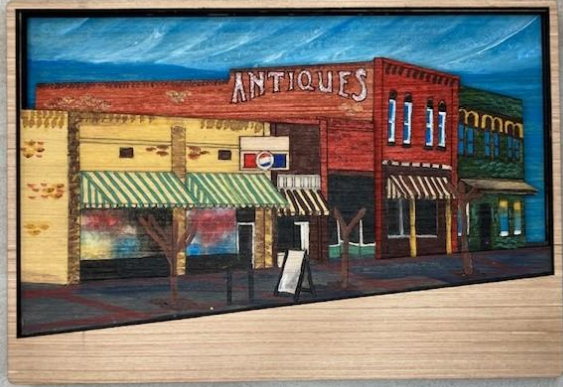
Paint the street, bike rail, and street sign Black (2). Then glue first three painted layers together. Leave off the top stained piece for after the completion of the trees



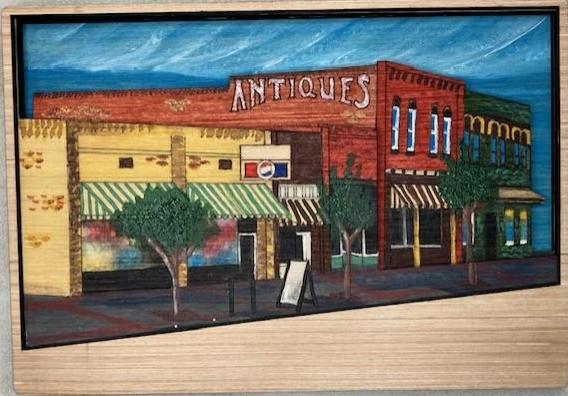
(I glued the top layer on early – Please wait until you're done painting to add the final layer) Add sidewalk brick with Light Rust (3) – use a little amount and let the shadows shine through the brick color. Also, add the diamond shape for the tree base in light rust.



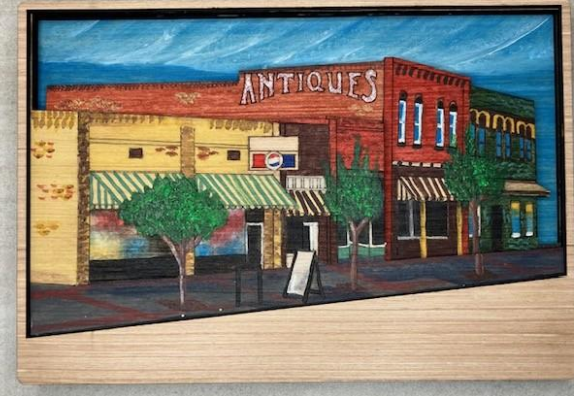
Using Light Brown (15), paint tree trunks (x3) and add dirt to the brick diamond from the last shape



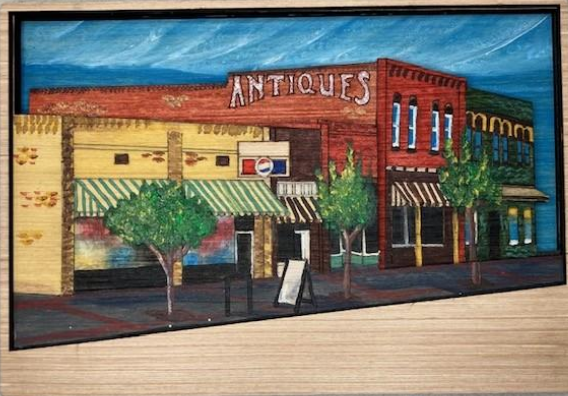
Add Dark Brown (14) to the right side of your tree trunks, branches and a little bit into the dirt under the trees



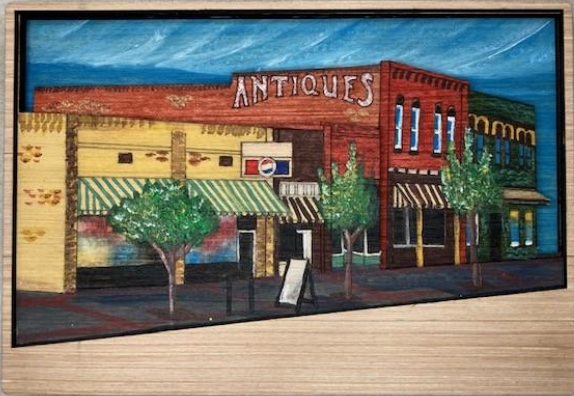
Add Dark Green (9) leaves using dabbing versus brushing



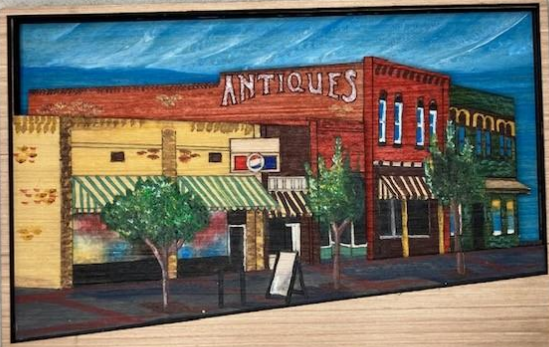
Do the same with Lime Green (8). Don't completely fill in over the Dark Green



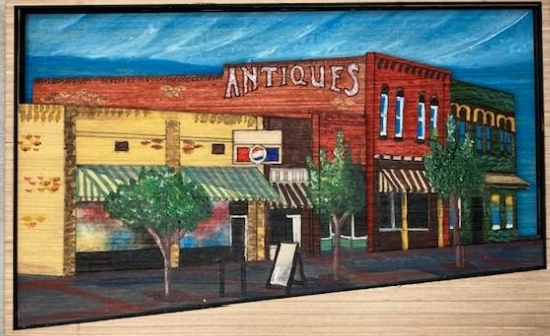
Add Mustard Yellow (7) to the left side of the tree leaves. Again, don't fill in the entire space, leave some color showing through



Add White (1) to the left and top of the tree leaves, using even more scarcity in this area



Add Black (2) to the right and center bottom of your tree leaves



Keep dabbing while the paint is wet to blend the colors together to your liking!

